

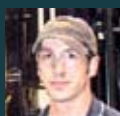
**VISIT US IN
TORONTO**



NATIONAL HEAVY EQUIPMENT SHOW
CONTRACTOR • RENTAL • LEASE • BUYER • MANUFACTURER
TORONTO • ONTARIO • CANADA

MARCH 5 & 6, 2009

Employee Spotlight



**Gary Tribe
Welder**

Gary has been with Craig for nearly two years. Starting as a Pre-Fabricator, Gary quickly rose to the challenge of the welding department where he remains a key player. When not working, Gary enjoys renovation work on his historic home.



**Allen O'Brien
Draftsman / Designer**

Allen is the in-house expert on grader and wheel loader wing assemblies. He spends countless hours in the installation shop and in the field to make sure that the designs he releases reflect the latest in technology and bulletproof real-world experience.



**Danny Monteith
CNC Machinist**

An 8 year veteran of Craig, Danny is a well rounded fabricator with an eye for detail. An active outdoorsman, Danny spends his free time kayaking in the summer and skiing when the snow flies.

**ATTACHMENT EXPERTS
SINCE 1946**



HUGE FACTORY SALES EVENT



3 WEEK DELIVERY GUARANTEED • OFFER ENDS MARCH 20TH

UNIVERSAL HYDRAULIC PAD-MOUNT THUMB

120-150 Series' \$3,295 - 200 Series \$3,595

The CRAIG Universal Pad-Mount Thumb is the perfect stocked solution for outfitting machines with a durable, easily installed, fully hydraulic thumb that is customizable to the specific tip-radius of each machine. When not in use the thumb weldment tucks up close to the stick for unparalleled visibility and convenience.

** MSRP Prices Listed (Canadian Dollars). Standard dealer discount structure applicable. Special Limited Time Canada Wide Promotion. Not valid with any other promotion. Tax, installation, dealer fees, and shipping extra. Jumper hoses not included.*

Find out more by contacting your local Craig sales rep. Email sales@craigattachments.com or call 1-800-565-5007

Chomp, Chomp, Chomp Meet the Bite Bucket



The 4-in1 Bite Bucket is a versatile tool combining all the best aspects of a standard dig bucket, clam grapple, ditch bucket and chuck blade. With this one attachment you can minimize the need for additional machines on the job-site. Dig like a standard bucket, move materials securely, grade the finished piece with the straight cutting edge, skim ground cover

with the serrated reverse clam edge or securely grab a piece of I-beam to smooth large areas all at once. This bucket is also great for accurately spreading aggregate into trenches by using the bucket as a "belly dump"

- Superior Brinell 400 steel is used in all wear areas.
- Available in Wedge-Lock, Pin-on, S Series, or Manual Bar Lock lugging
- GET parts to your specifications
- Pin-On hook-ups are align-bored to OEM tolerances

Find out more by contacting your local rep at sales@craigattachments.com or call 1-800-565-5007

682-10 High Speed One-Way Plow Special Offer



Available immediately due to overstock are these two 682-10 High Speed one way plows. With a 30 degree moldboard angle and standard pushpole back frame these plows are great on any standard tandem truck or motor grader application.

Available now for \$8,995 MSRP + Shipping

- 10' cleared path
- Adjustable, replaceable wear shoes
- Universal chain lift
- Rubber deflector
- Features a unique trip that jumps up and back to clear obstacles
- 30° plow angle

Standard dealer discount structure applicable. Find out more by contacting Jeff Kimball at kimball@craigattachments.com or call 1-800-565-5007