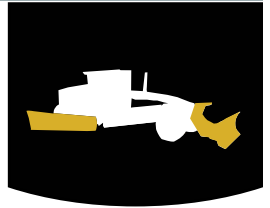


MG-QKMPG

# Parallel Quick Hitch Lift Group



The Craig parallel quick hitch lift group system allows for maximum work-site, and seasonal, versatility. Change front-mount Grader attachments in just seconds. Female blanks available for converting existing attachments.

- Up to 28" of lift
- Rugged parallel design maintains blade angle at all heights
- Large contact area spreads the load over a wide surface for strength
- Works with all standard Craig snowplows
- Mechanical locking pins standard (hydraulic pins optional)

## CRAIG

QUALITY WE STAND BEHIND

Attachments • Built Right • Fit Right

#### HEAD OFFICE

96 McLean Avenue  
Hartland, NB  
E7P 2K5

ph: (506) 375-4493  
fx: (506) 375-4848

#### CAMBRIDGE BRANCH

315 Thompson Drive  
Cambridge, ON  
N1T 2B3

ph: (519) 623-9500  
fx: (519) 623-9511

1-800-565-5007

[www.craigattachments.com](http://www.craigattachments.com)