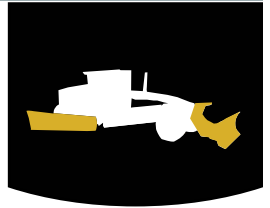


MG-USG

Universal Snow Gate



Mounting to the right side of the factory moldboard, the Craig Universal Snow Gate operates hydraulically allowing the operator to momentarily interrupt the flow of snow to avoid filling driveways or intersections. It's built extra heavy duty to tackle extreme snow and ice. A trip edge and floating gate runner allow it to operate cleanly on uneven surfaces.

- 1,275lbs
- 47.5" reversible bolt-on cutting edge
- Trip edge
- 26" tall 0.25" thick moldboard
- Mounts to factory moldboard slides

CRAIG

QUALITY WE STAND BEHIND

Attachments • Built Right • Fit Right

HEAD OFFICE

96 McLean Avenue
Hartland, NB
E7P 2K5

ph: (506) 375-4493
fx: (506) 375-4848

CAMBRIDGE BRANCH

315 Thompson Drive
Cambridge, ON
N1T 2B3

ph: (519) 623-9500
fx: (519) 623-9511

1-800-565-5007

www.craigattachments.com